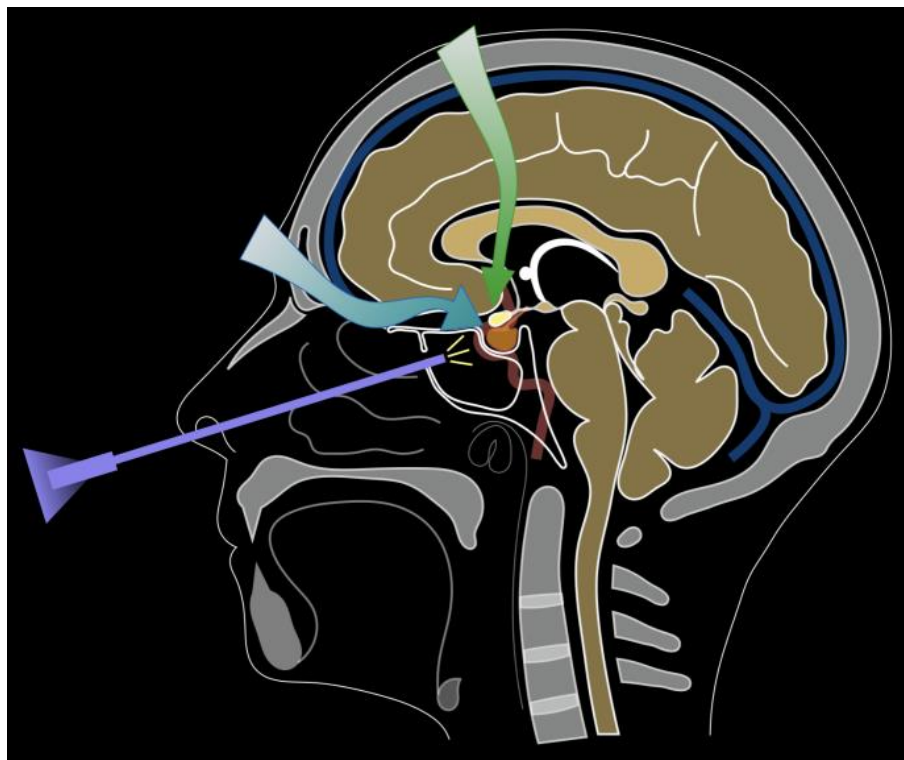


Lyon's Pituitary

An International
Multidisciplinary Course

March 27-29 2023
Lyon, France



Course Directors

H DUFOUR (Marseille, FRANCE)
S FROELICH (Paris, FRANCE)
S GAILLARD (Paris, FRANCE)
E JOUANNEAU (Lyon, FRANCE)

Endocrinology
G RAVEROT, H LASOLLE (Lyon, FRANCE)



The scientific and educational content of this event
has been endorsed by the EANS



Faculties

Organizer

E JOUANNEAU (Lyon, France)

Course Directors

H DUFOUR (Marseille, FRANCE)

S FROELICH (Paris, FRANCE)

S GAILLARD (Paris, FRANCE)

E JOUANNEAU (Lyon, FRANCE)

Endocrinology

G RAVEROT, H LASOLLE (Lyon, FRANCE)

Faculties

M BRUNEAU, (Bruxelles, BELGIAN)

L CAVALLO (Naples, ITALY)

R DANIEL (Lausanne, SWIZERLAND)

M MESSERER (Lausanne, SWIZERLAND)

T MELING (GENEVA, ITALY)

D MAZZATENTA (Bologna, ITALY)

R PRIETO (Madrid, SPAIN)

H SCHROEDER, (Greifswald, GERMANY)

F DI ROCCO, (Lyon, FRANCE)

A SAZTHMARI (Lyon, FRANCE)

Local Organizing Committee :

T JACQUESSON

R MANET

P MERTENS

E SIMON

Lab staff :

V NIRDE

S BOUCHEZ

JLORENTE

T MEZIERES

A PASSARET

P RENEAUD

Dear friends and colleagues,

It is my great pleasure to invite you, both participants and faculties, for the second EANS - SFNC Masterclass and Hands-On Course focused on Pituitary Tumors. The course will take place in the modern facilities either of the University Campus and the Neurological Hospital of Lyon, France.

This course is intended for younger neurosurgeons, dealing with the basic and fundamental principles of operative procedures (endoscopes, microscopes etc), and endocrine management of such tumors.

Our goal is to teach the modern management of Pituitary Adenomas or Craniopharyngiomas which represent an over-speciality in Neurosurgery, nowadays.

Theoretical background will be provided in separate lectures by our distinguished faculty, prestigious European pituitary surgeons.

Lyon is a pleasant city to live in and to visit. It has a rich history, numerous museums and a well-known history of culinary school.

I am sure that you will have enough opportunities during the course to feel the Lyon hospitality.

I am looking forward to meeting you all in Lyon!

**Emmanuel JOUANNEAU, MD, PhD
Course Director**



Scientific Programme

March, Monday 27 2023

10.00 am Registration & Welcome

E JOUANNEAU (FRANCE) – P MERTENS (FRANCE)

Anatomical Laboratory - School of surgery

10.20 – 11.00 *Lecture -Pituitary Surgery History*

E JOUANNEAU E (Lyon, FRANCE)- R PRIETO (Madrid, SPAIN)

Lecture - Anatomy of Sellar and Parasellar locations *T*

JACQUESSON - E SIMON - P MERTENS

11.00 – 1.00 pm Lectures - Pituitary surgery

Sellar and Pituitary Surgery (macroadenoma) *D*

MAZZATENTA

Sellar and Pituitary Surgery (microadenoma) *S*

GAILLARD

Suprasellar Extended Approaches

H DUFOUR- L CAVALLO

Parasellar Extended Approaches

S FROELICH - D MAZZATENTA

Giant Adenomas: EANS Guidelines

M MESSERER

1.00 - 2.00 pm Lunch

2.00 - 6.00 pm Laboratory Training - endonasal approaches

March, Tuesday 28 2023

8.00 - 10.30 am	Live surgery: Pituitary cases E JOUANNEAU - R MANET (Lyon, FRANCE)
10.30 – 1.00 pm	Lectures Lecture - Update on management of PitNets G RAVEROT, H LASOLLE (Lyon, France) Peculiarities of Pediatric Cases F DI ROCCO - A SAZTHMARI Reviews and cases discussion ALL PARTICIPANTS
1.00 - 2.00 pm	Lunch
2.00 - 6.00 pm	Laboratory training - Anatomical Laboratory

March, Wednesday 29 2023

8.00 - 09.30 am Pituitary Adenomas - Craniopharyngiomas video
E JOUANNEAU - R MANET (FRANCE)

10.00 – 1.00 pm Lectures - Updates on Craniopharyngiomas
H DUFOUR (Marseille, France)- S FROELICH (Paris, France) - L CAVALLO (Naples, Italy) - D MAZZATENTA (Bologna, Italy) – M BRUNEAU (Brussels, Belgium) - H SCHROEDER (Greifswald, Germany)

- Endocrinological management

G RAVEROT- H LASOLLE

- Imaging Diagnosis:

R PRIETO

- Surgery:

- Nasal indications

L CAVALLO – H DUFOUR

- Cranial indications

D MAZZATENTA – M BRUNEAU

- Intraventricular CPs management :

H SCHROEDER (Web conference)

- Pediatric specificities :

F DI ROCCO – A SZATHMARI

- Therapeutic Strategies in Adults:

Targeted Therapy, radiotherapy, surgery

E JOUANNEAU

- European Network

E JOUANNEAU

- Cases discussion

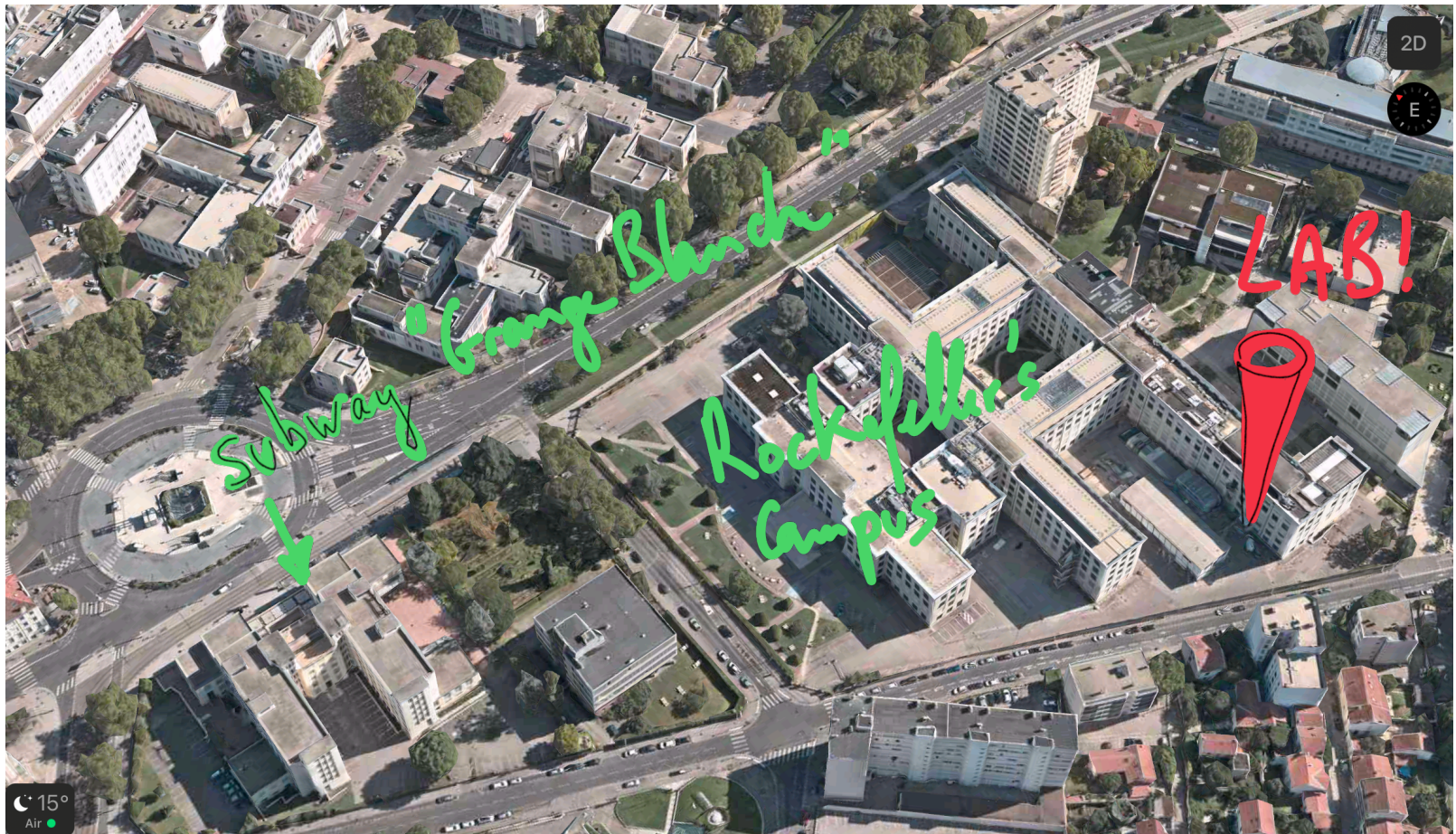
1.00 - 2.00 pm Lunch

2.00 - 5.00 pm Laboratory Training - cranial approaches

5.00 pm Wrap-up

PRACTICAL INFORMATION

VENUE



All sessions will be held at the:
**Département Universitaire d'Anatomie, Faculté de Médecine
Lyon Est, 8 avenue Rockefeller, 69373 Lyon Cedex 08**

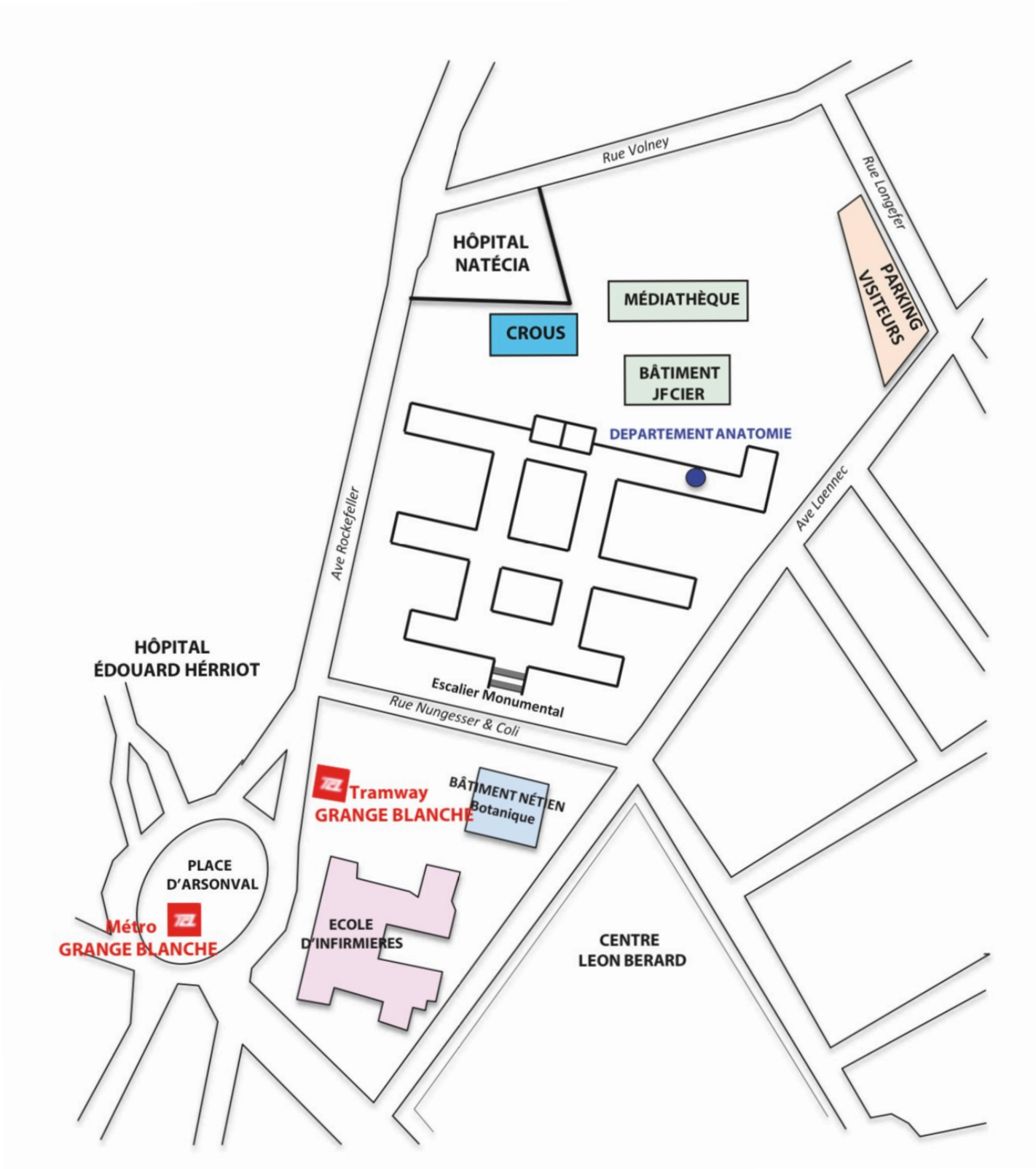
**Directions Metro ligne D «Grange-Blanche», then walk 5 min
to the «Faculté de Médecine Lyon Est».**

**The anatomic lab is on 1st floor, at the far end of the corridor
on the right. The course will be signposted from the main
entrance of the university.**

PRACTICAL INFORMATION

natalie.ruxton@mcocongres.com

**The on-site staff can be reach using mails:
secretariat.laboratoire-anatomie@univ-lyon1.fr
emmanuel.jouanneau@chu-lyon.fr
Emergency number in France: 112**



We acknowledge the support of :

Integra/Codman

Stryker

Leica

Arthrex

Climdal

Baxter

INTEGRA
LIMIT UNCERTAINTY

stryker®

LEICA microsystems

Arthrex®

CLIMDAL